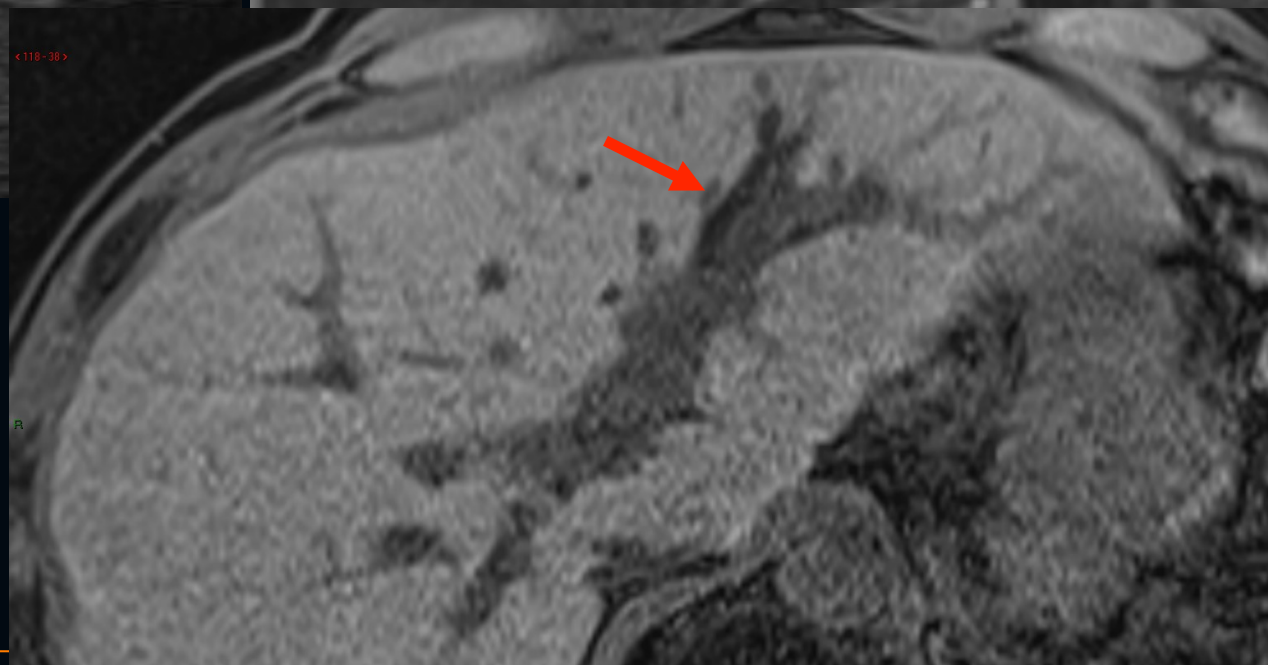
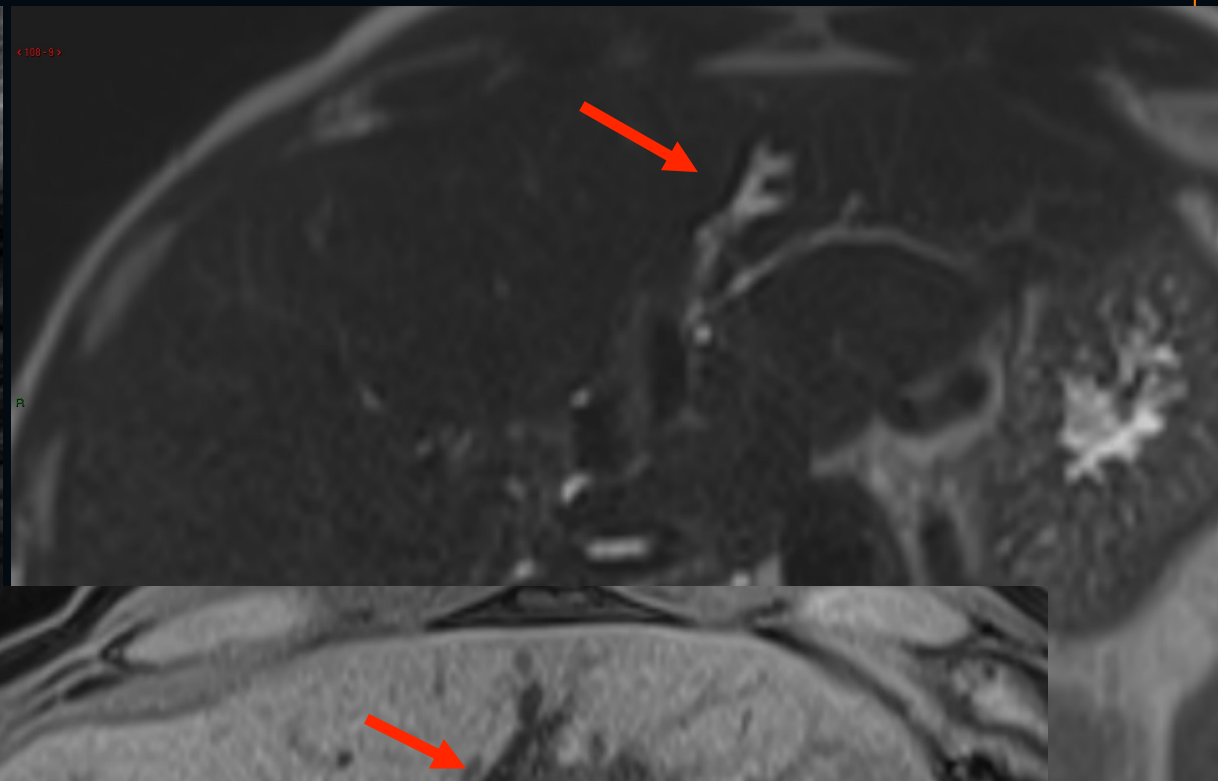
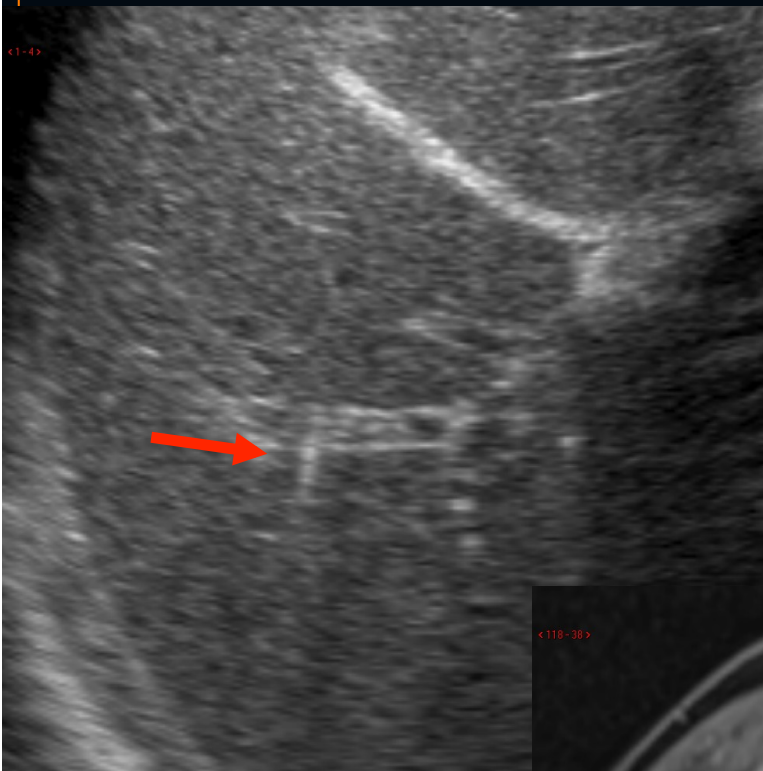
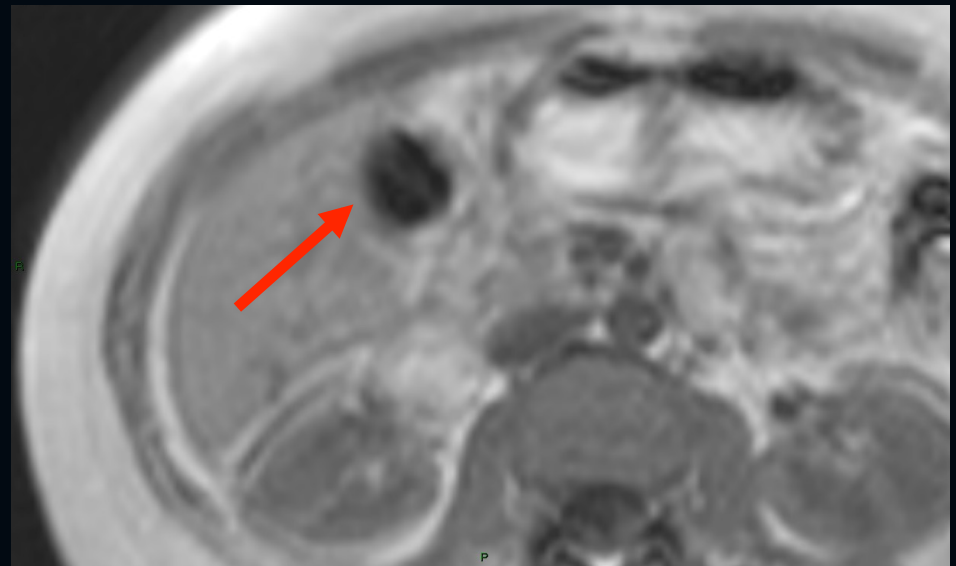
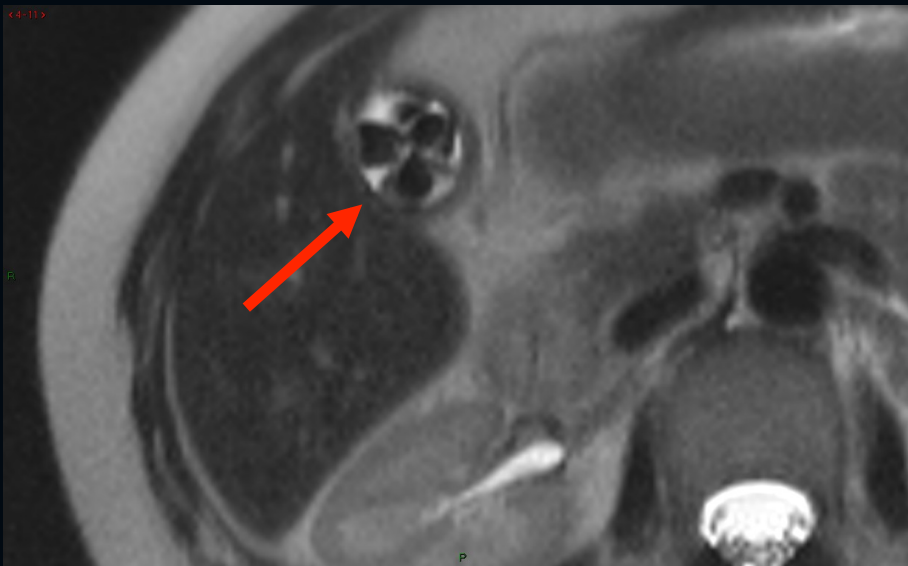
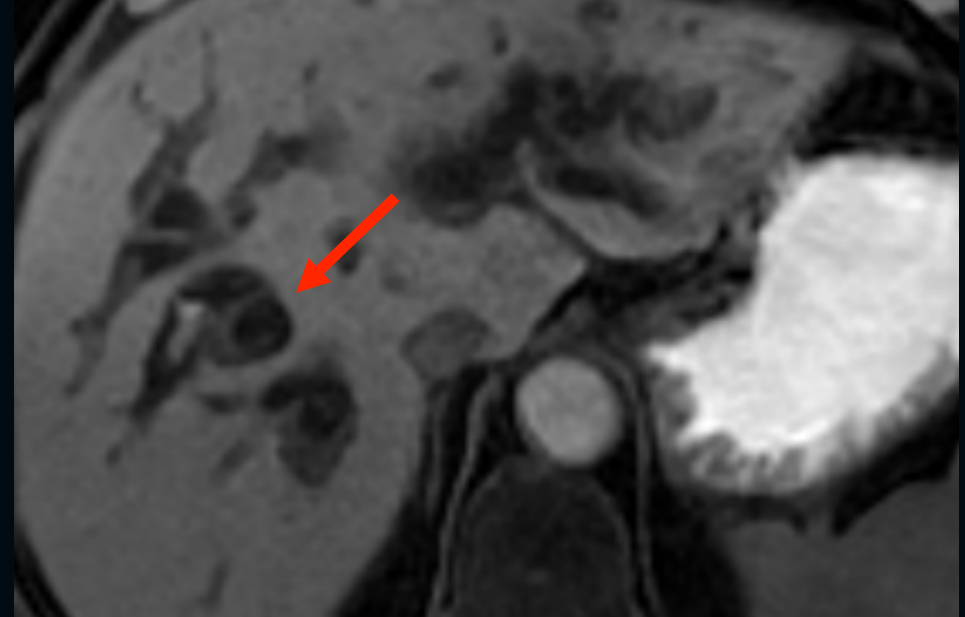
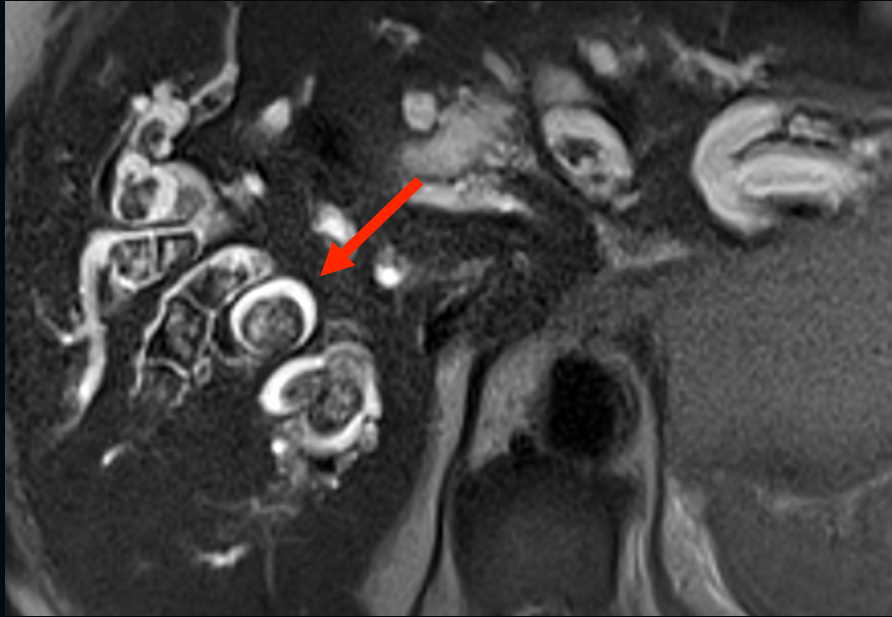


# MAIS, calcul trop petit



# MAIS, signal variable

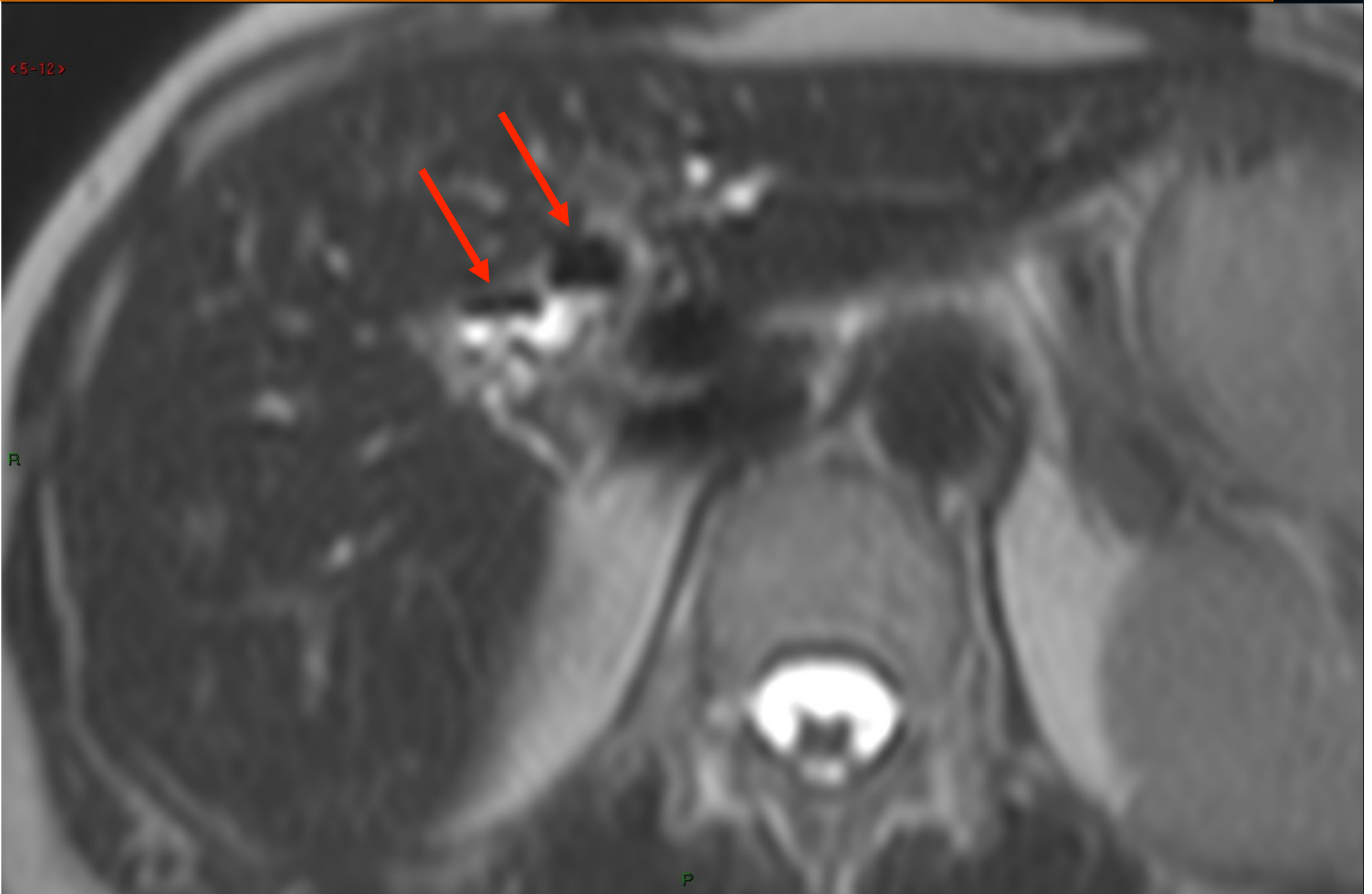


# MAIS, diagnostic différentiel

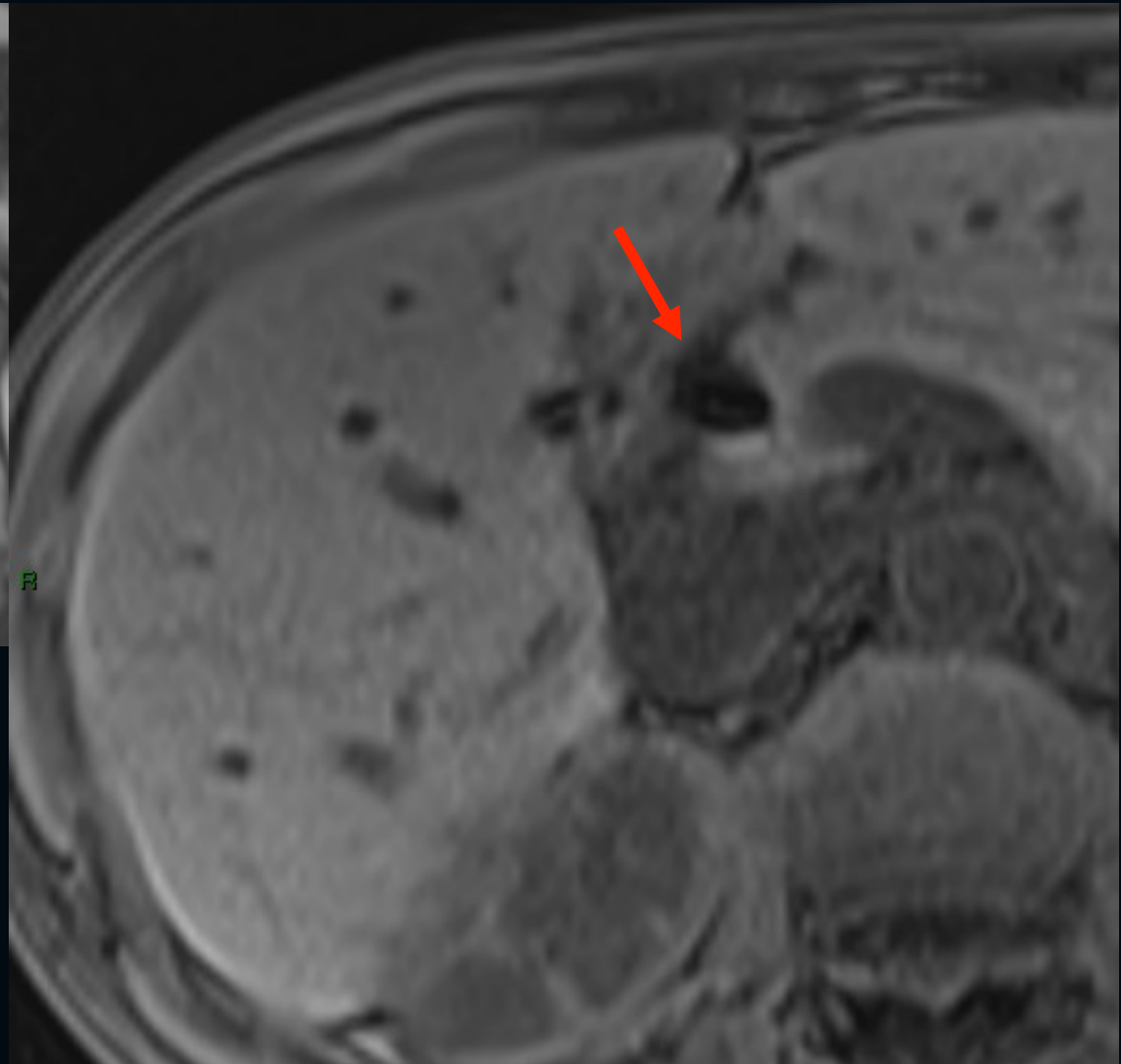
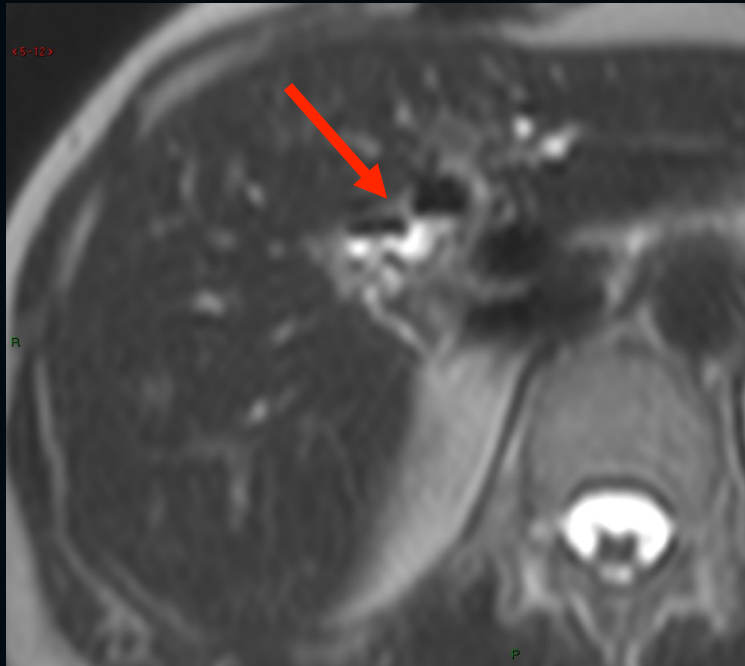
<5-12>

R

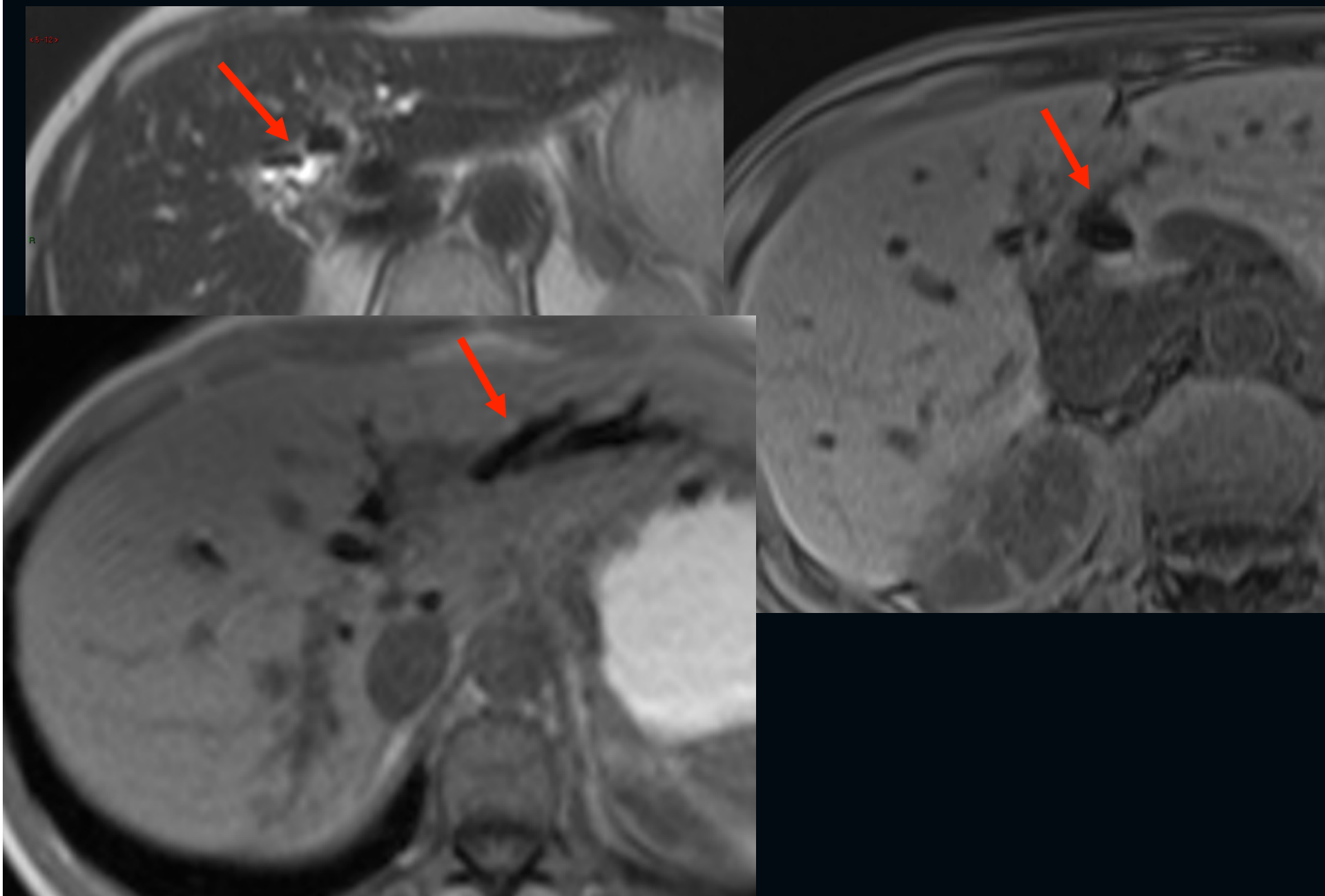
P



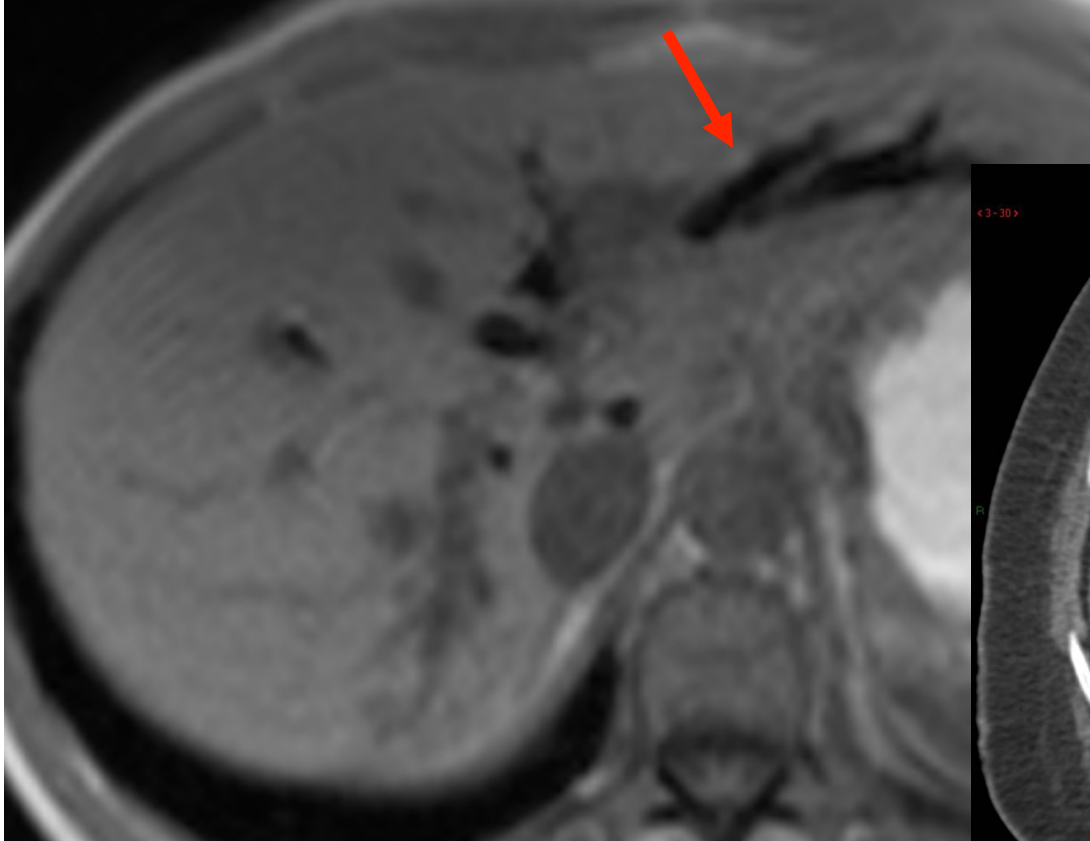
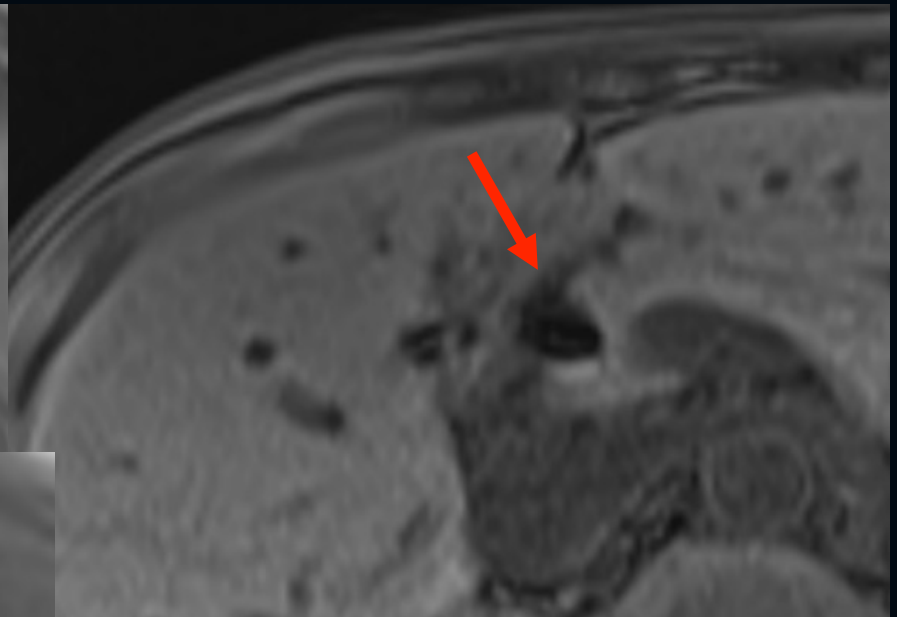
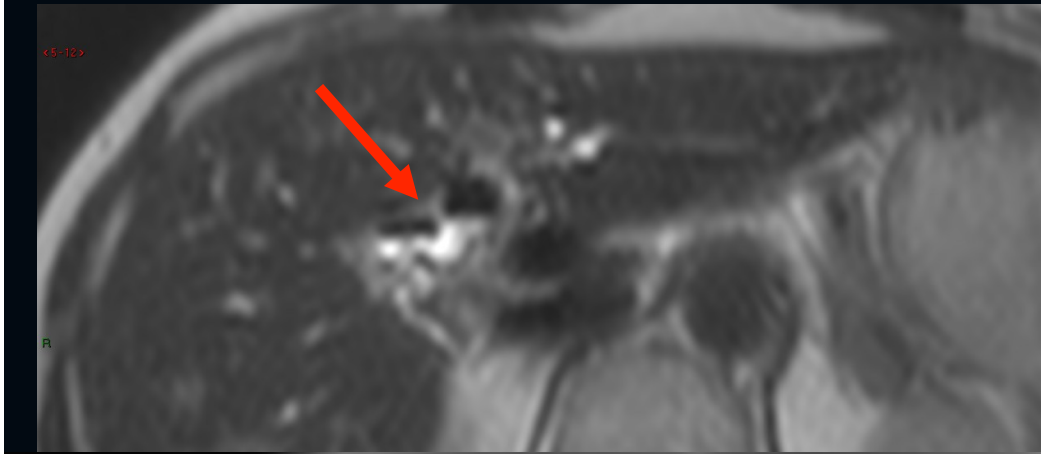
# MAIS, diagnostic différentiel



# MAIS, diagnostic différentiel



# AÉROBILIE

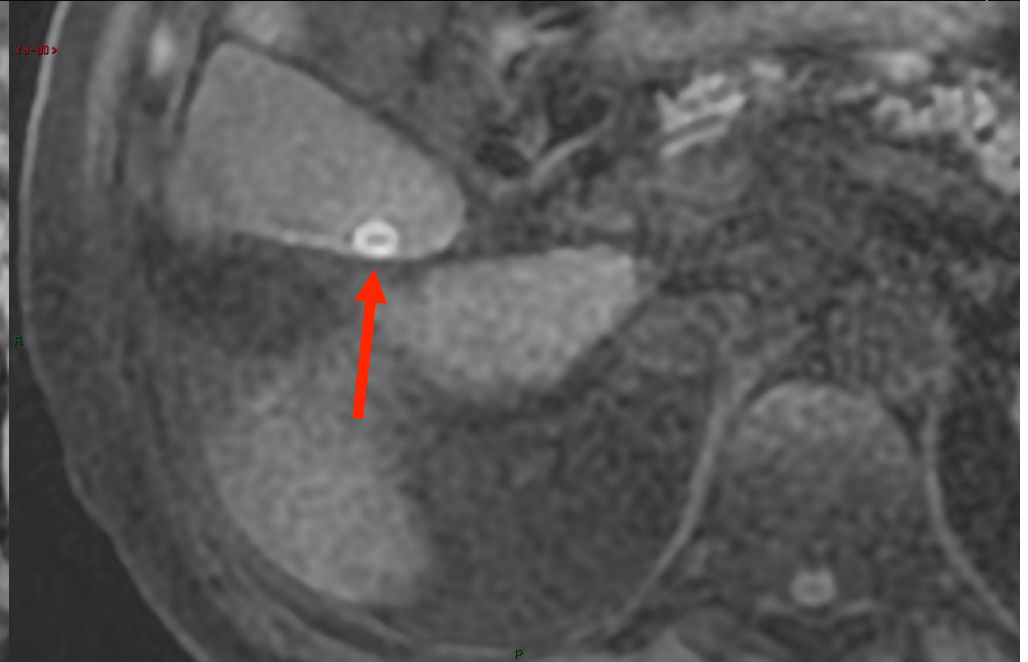
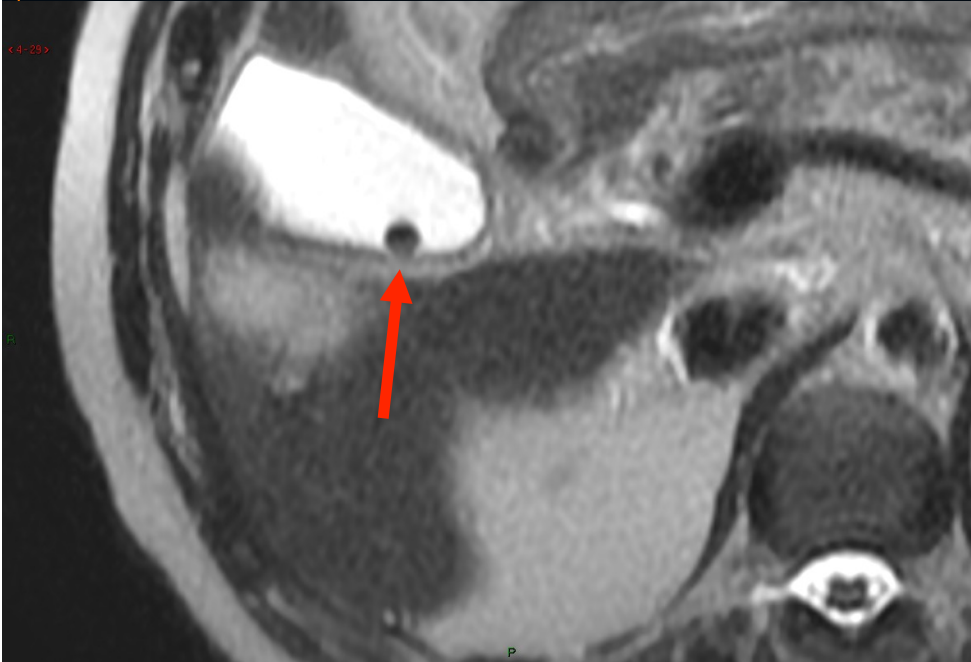


## 3<sup>ème</sup> MESSAGE

**On ne sait pas caractériser le type de calcul selon son signal ou sa forme en IRM**

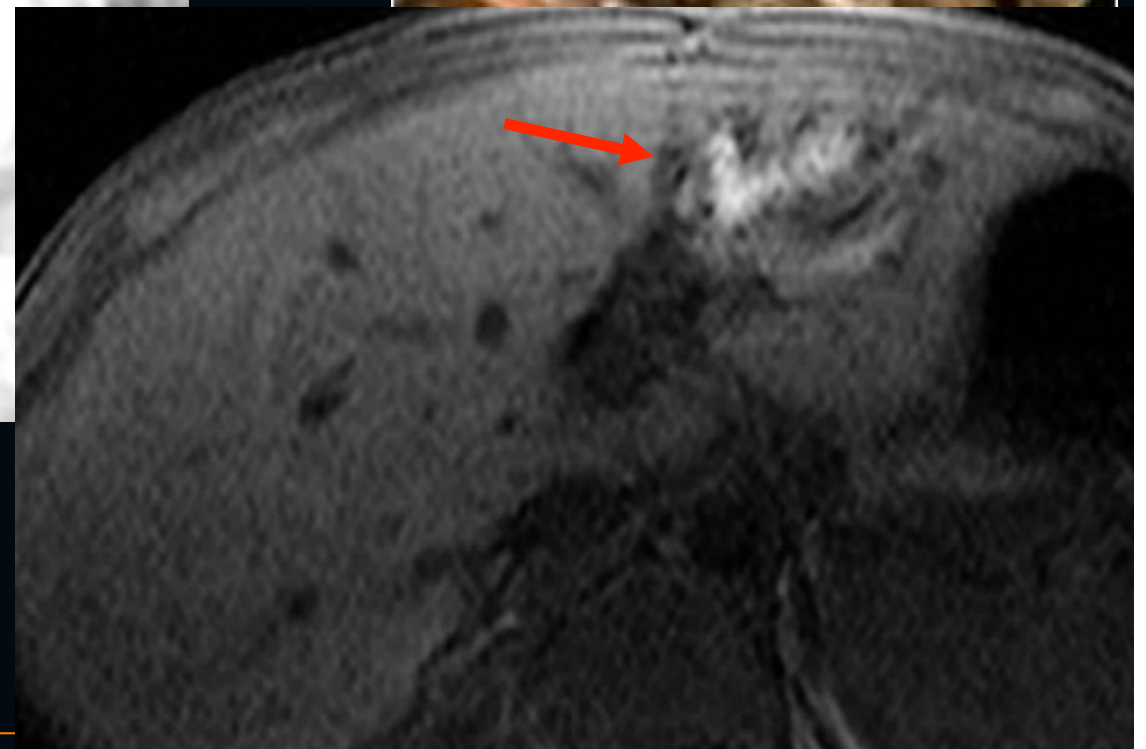


# Calcul cholestérolique

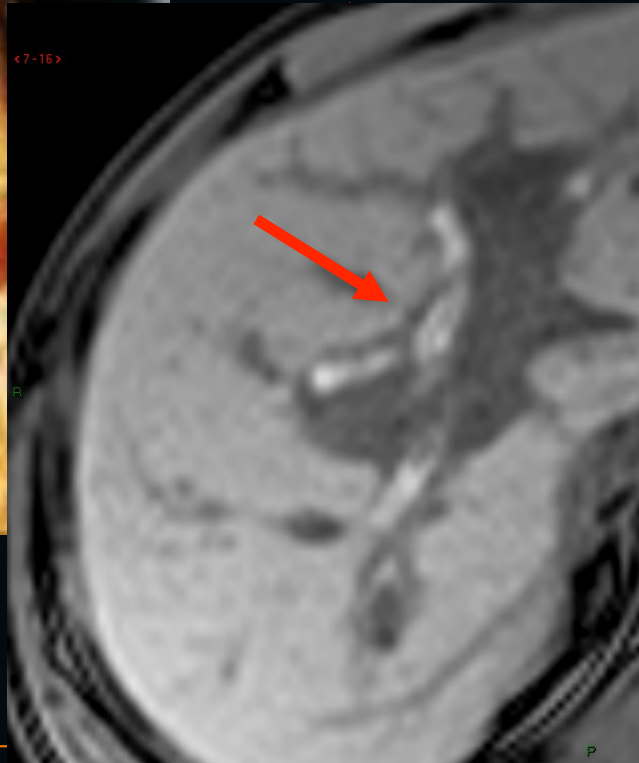
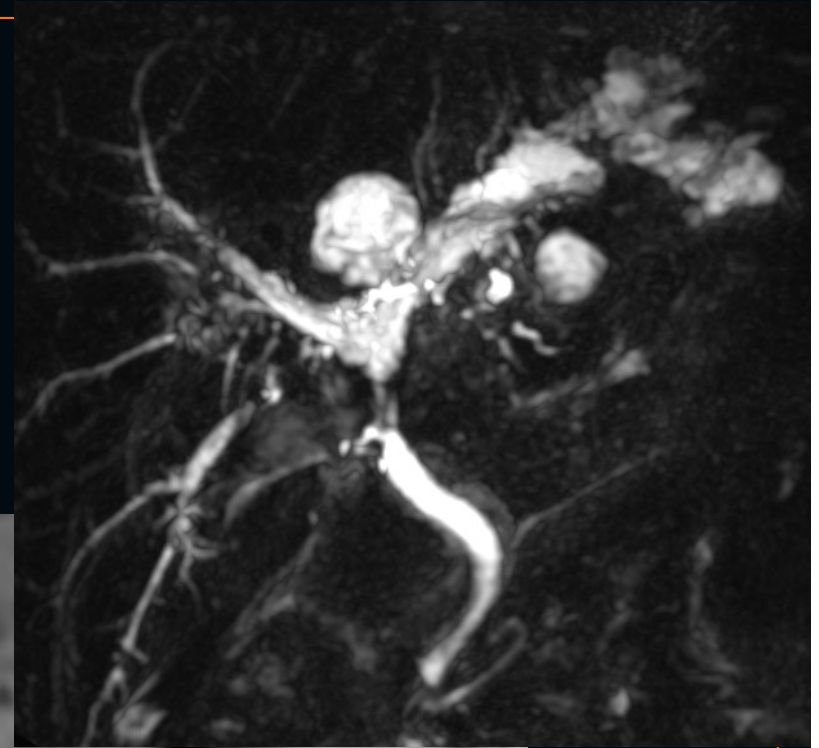




# Calcul pigmentaire brun



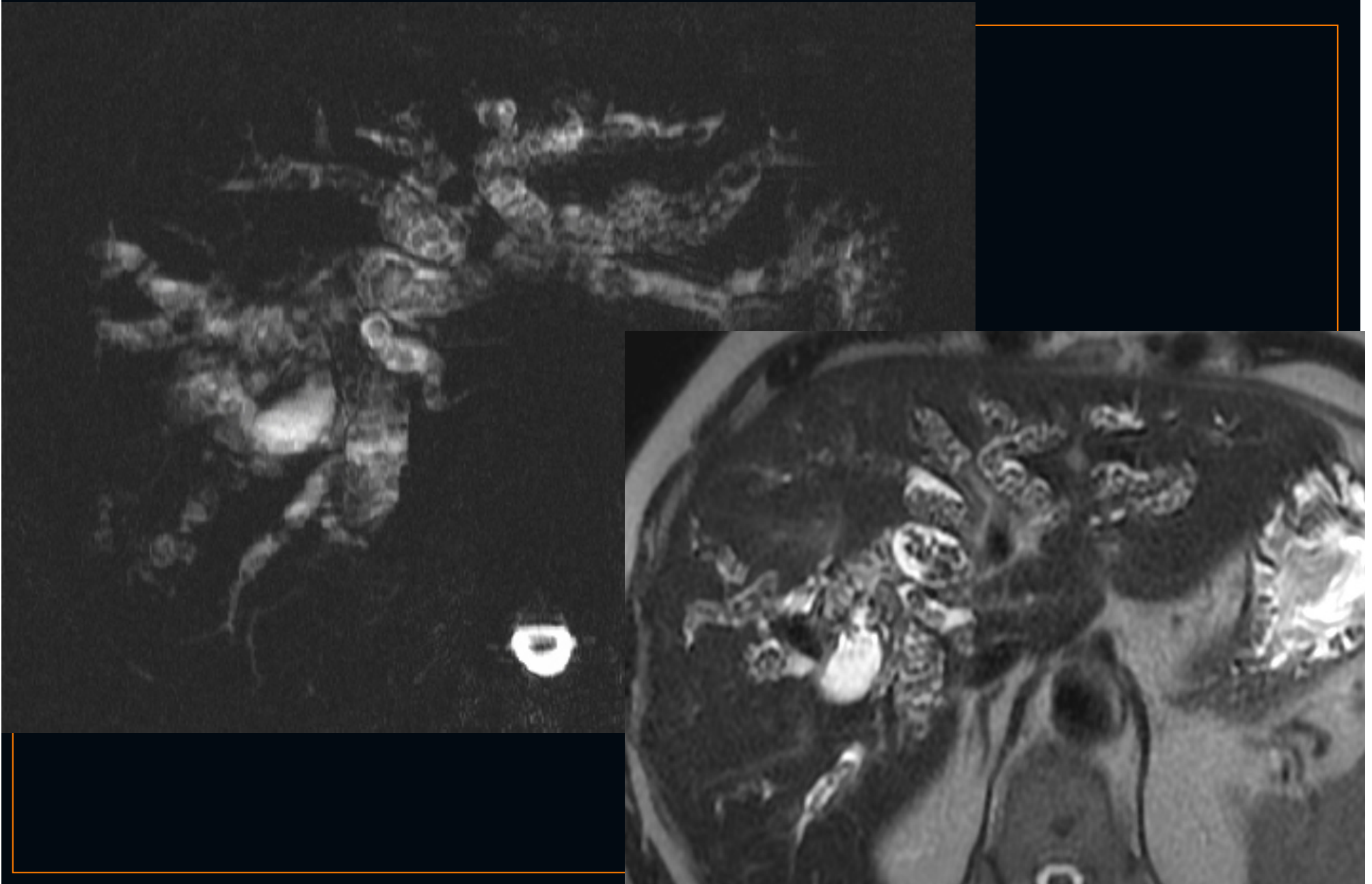
# Calcul pigmentaire noir



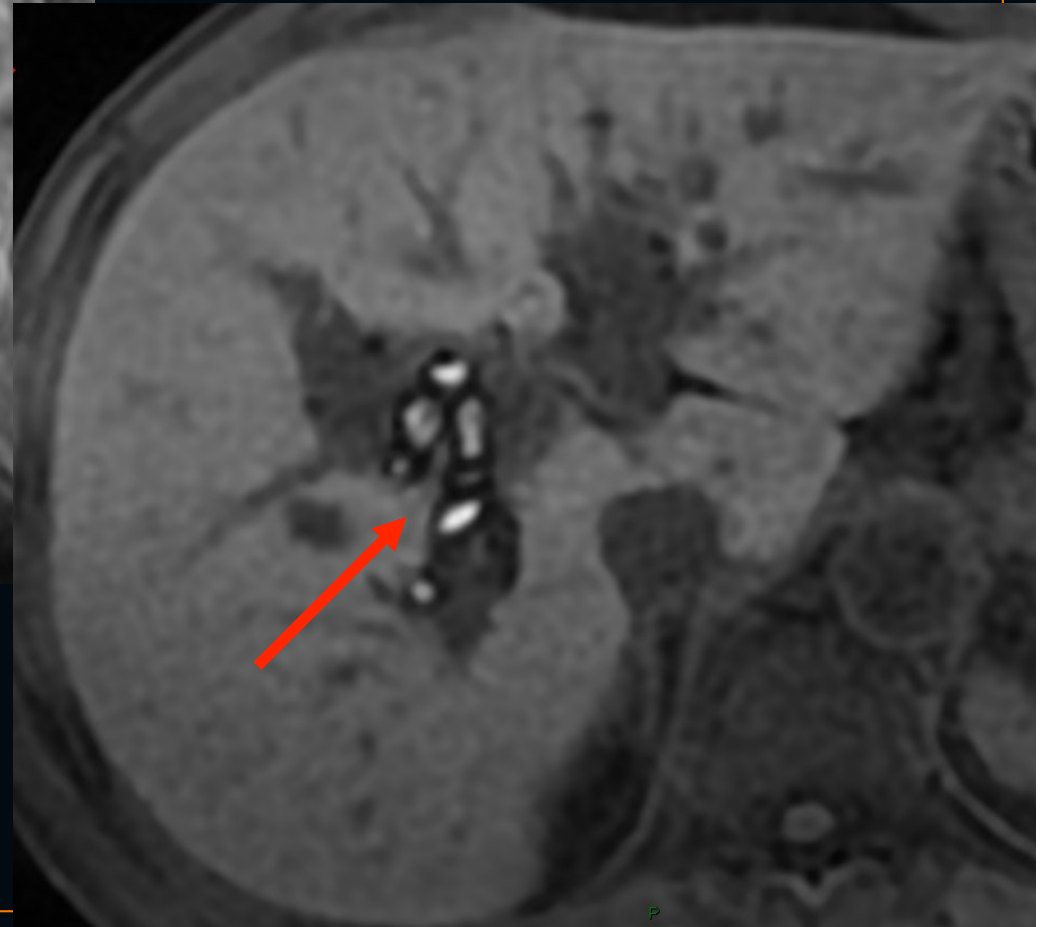
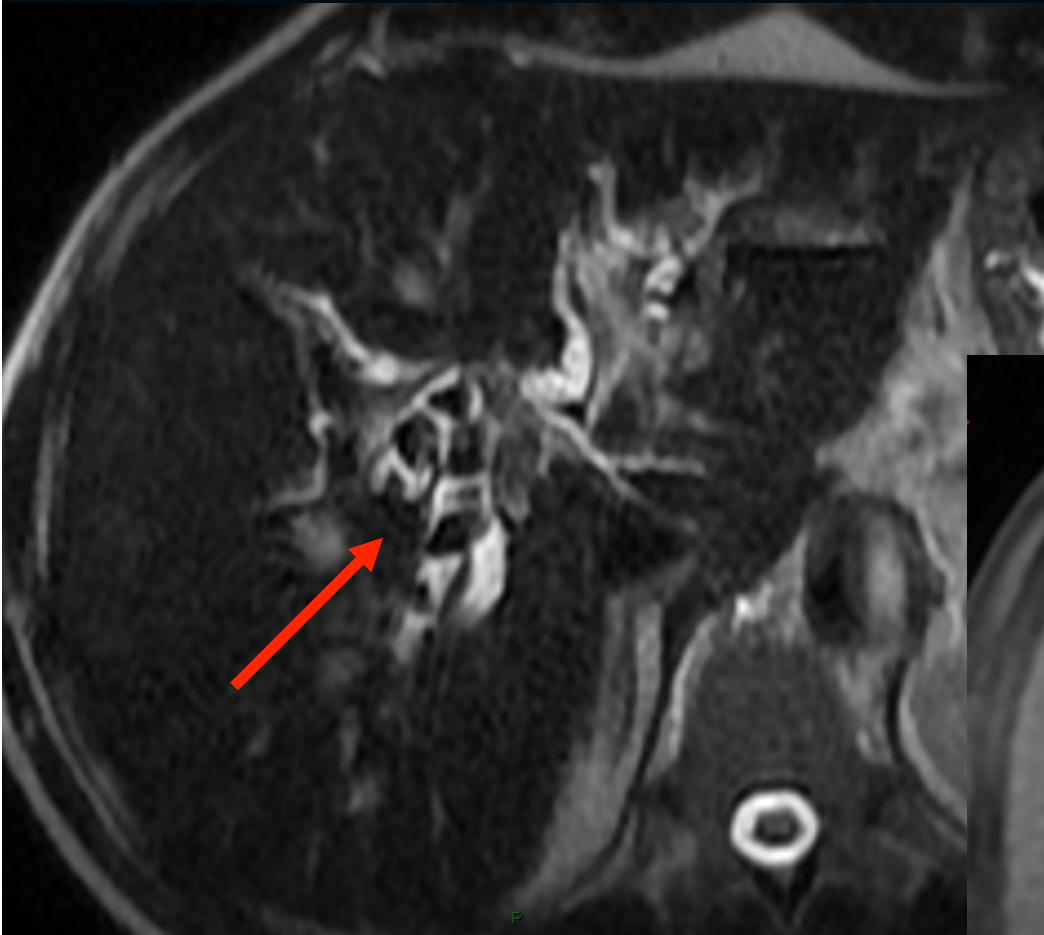
## 4<sup>ème</sup> MESSAGE

**Certaines pathologies sont à l'origine  
d'hépatolithiases**

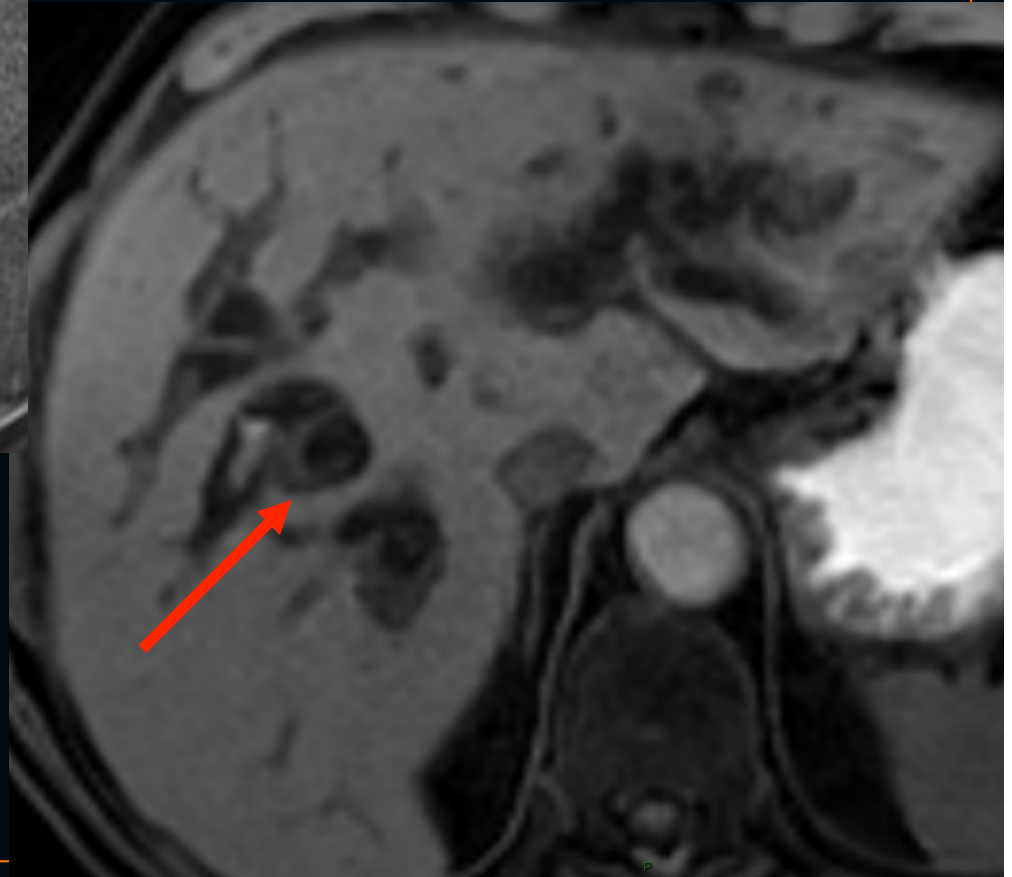
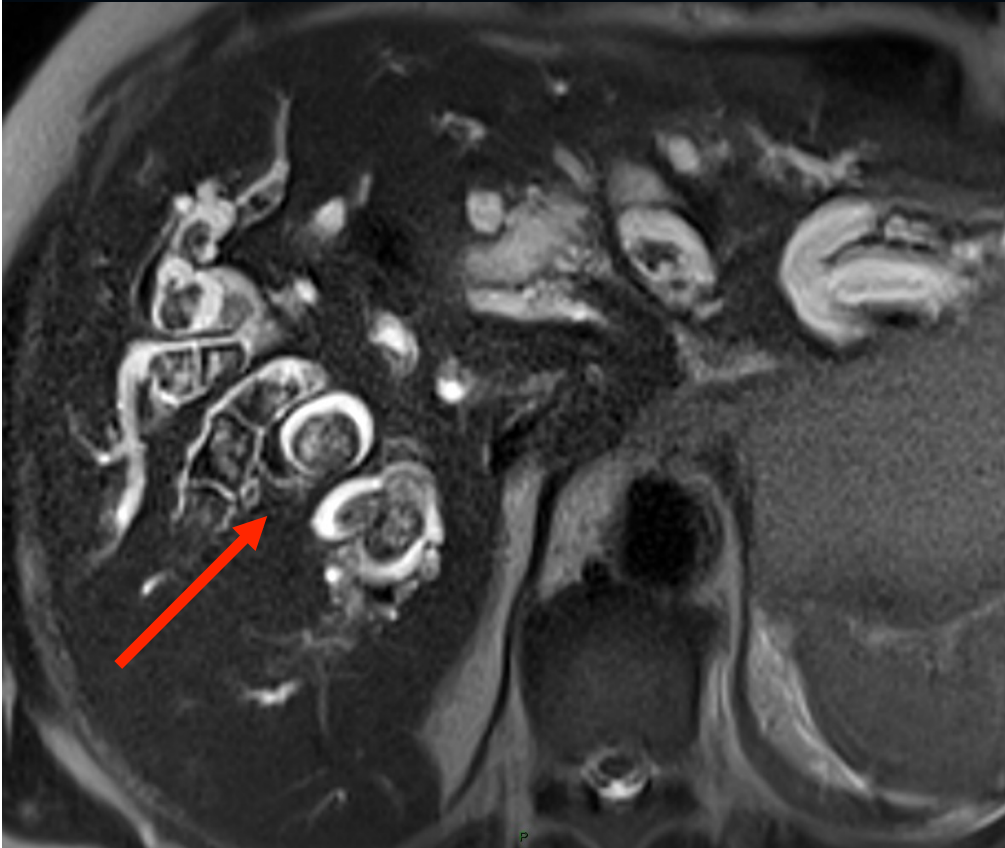
# Forme sévère de LPAC



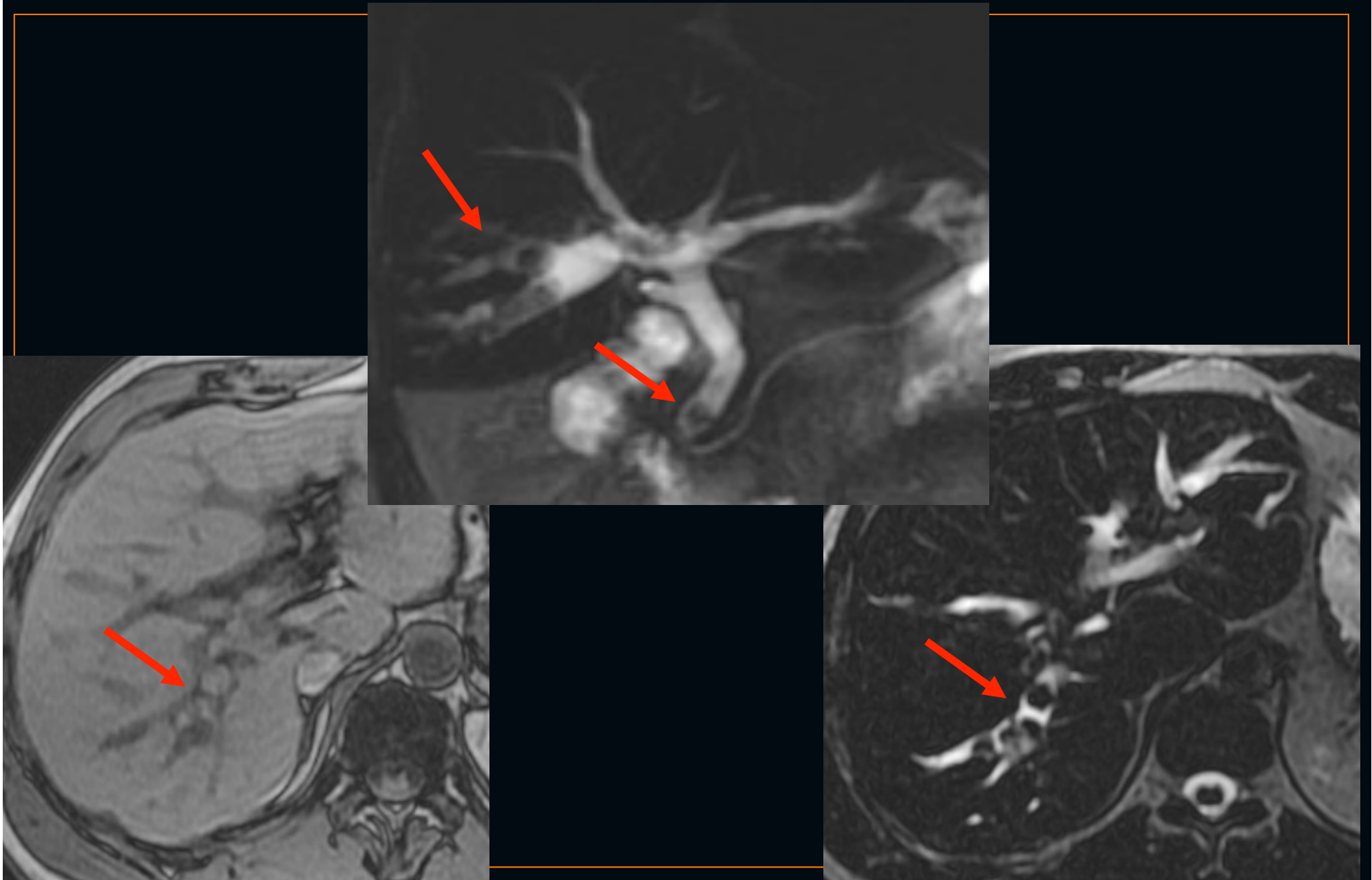
# Forme sévère de LPAC



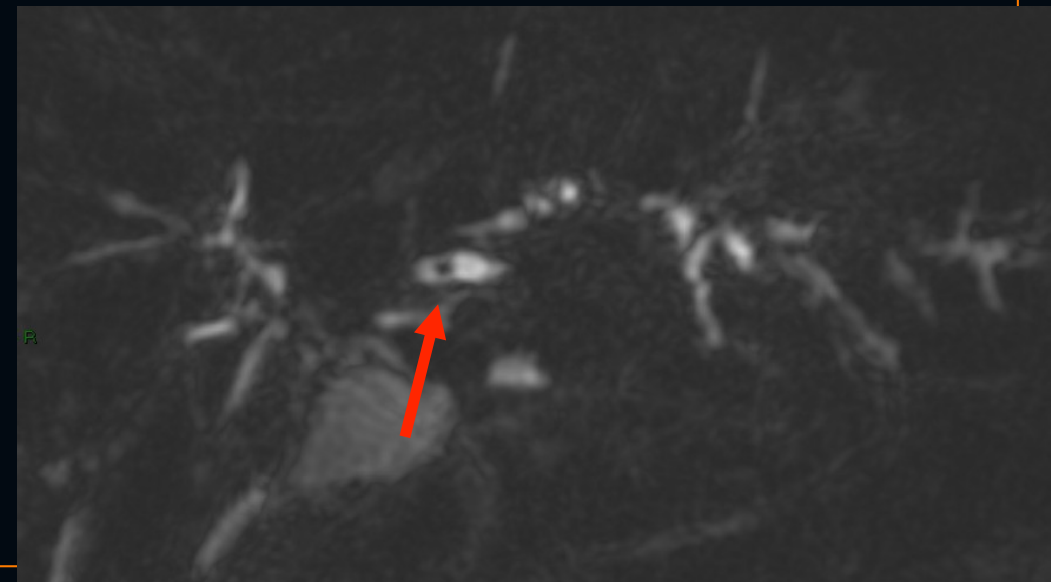
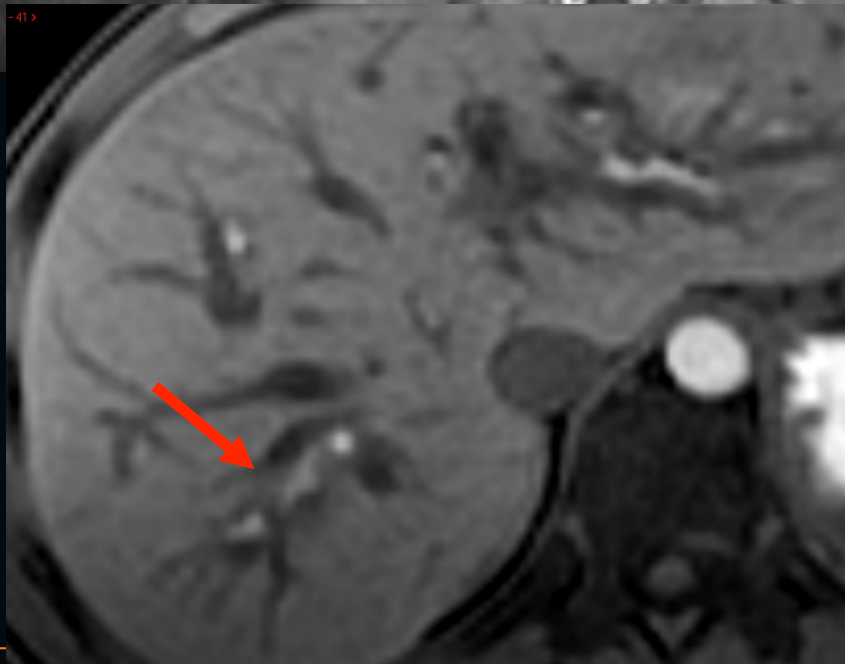
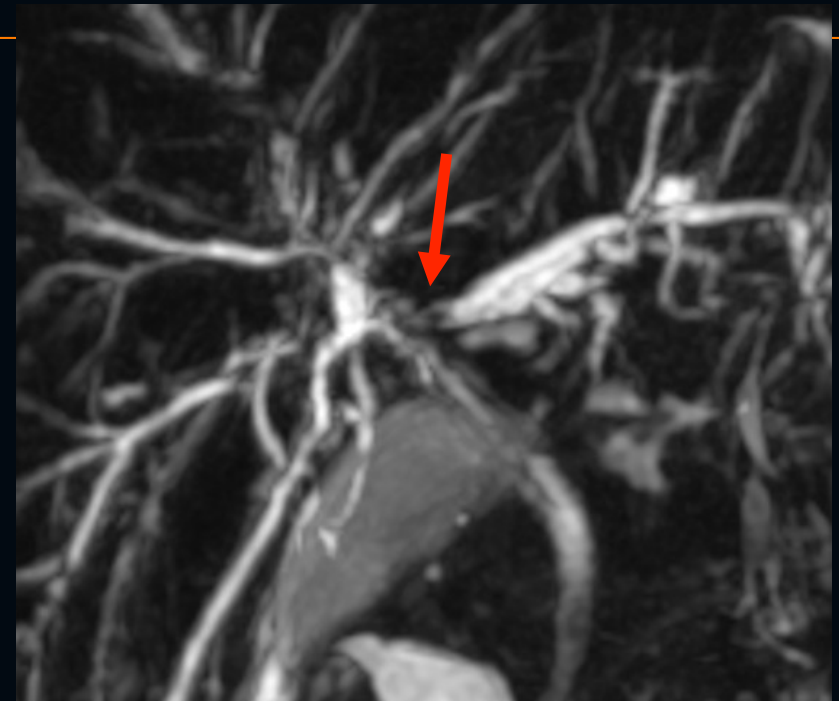
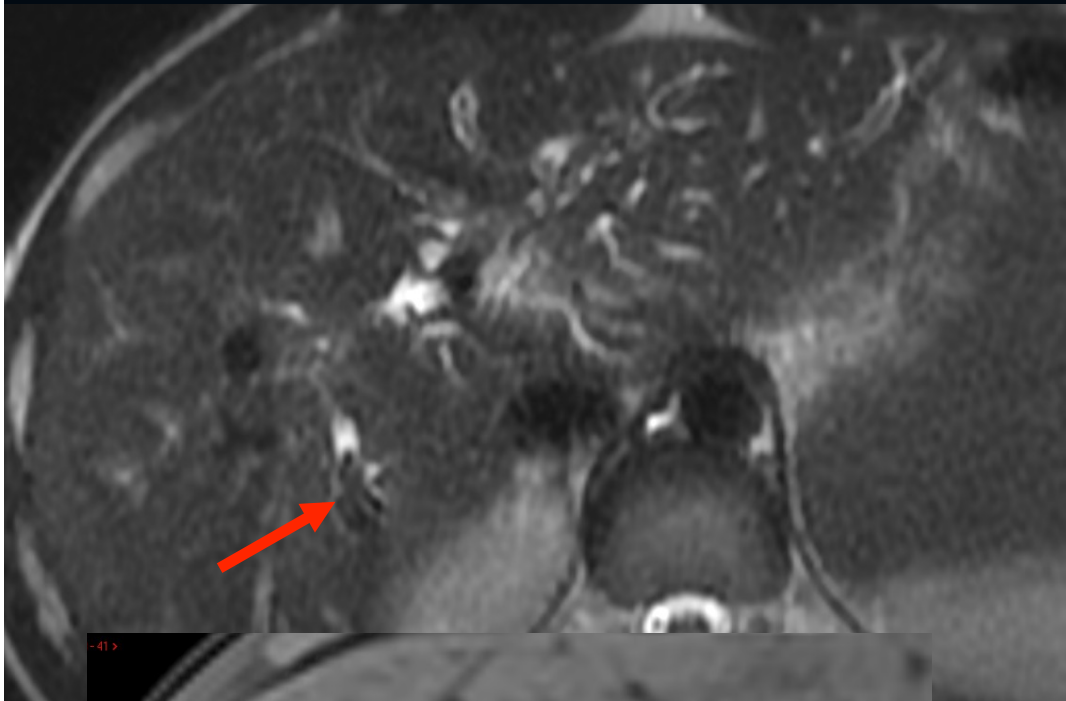
# Forme sévère de LPAC



# Cholangite pyogénique récurrente

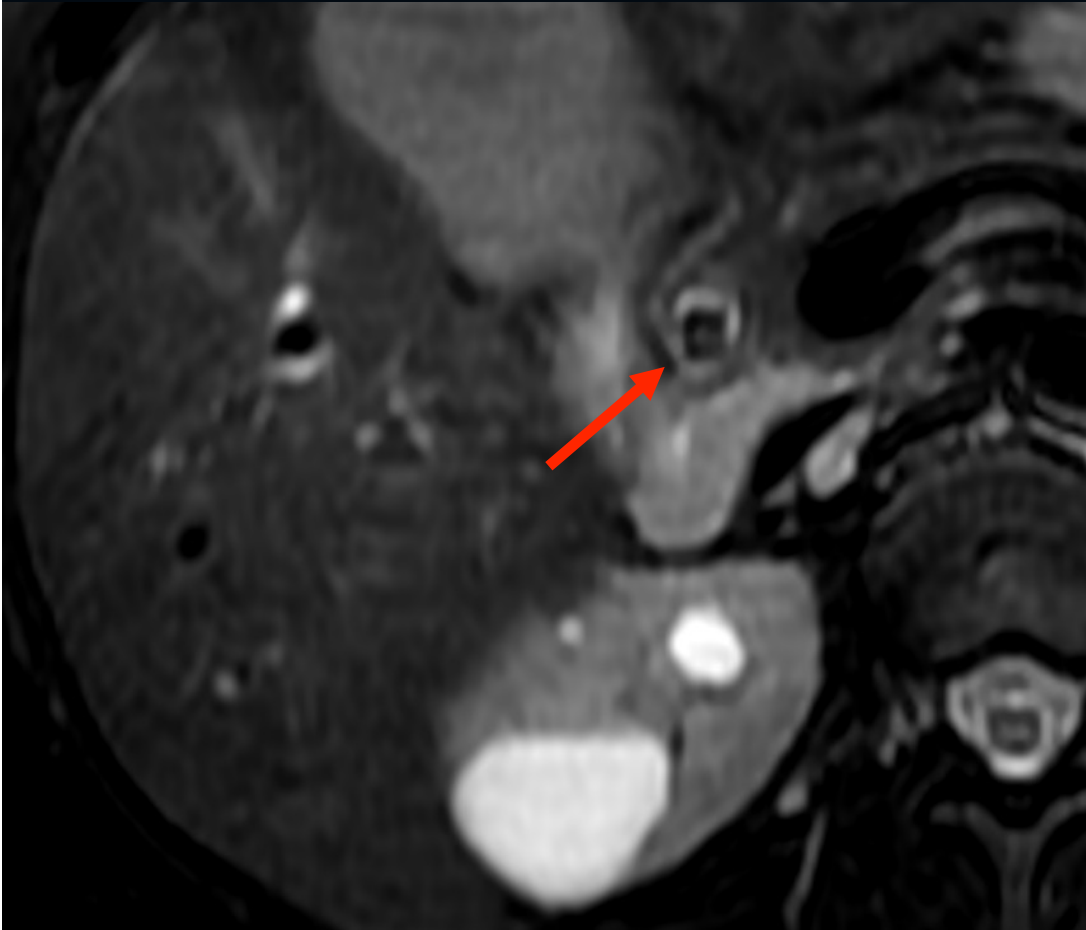


# Cholangite Sclérosante Primitive

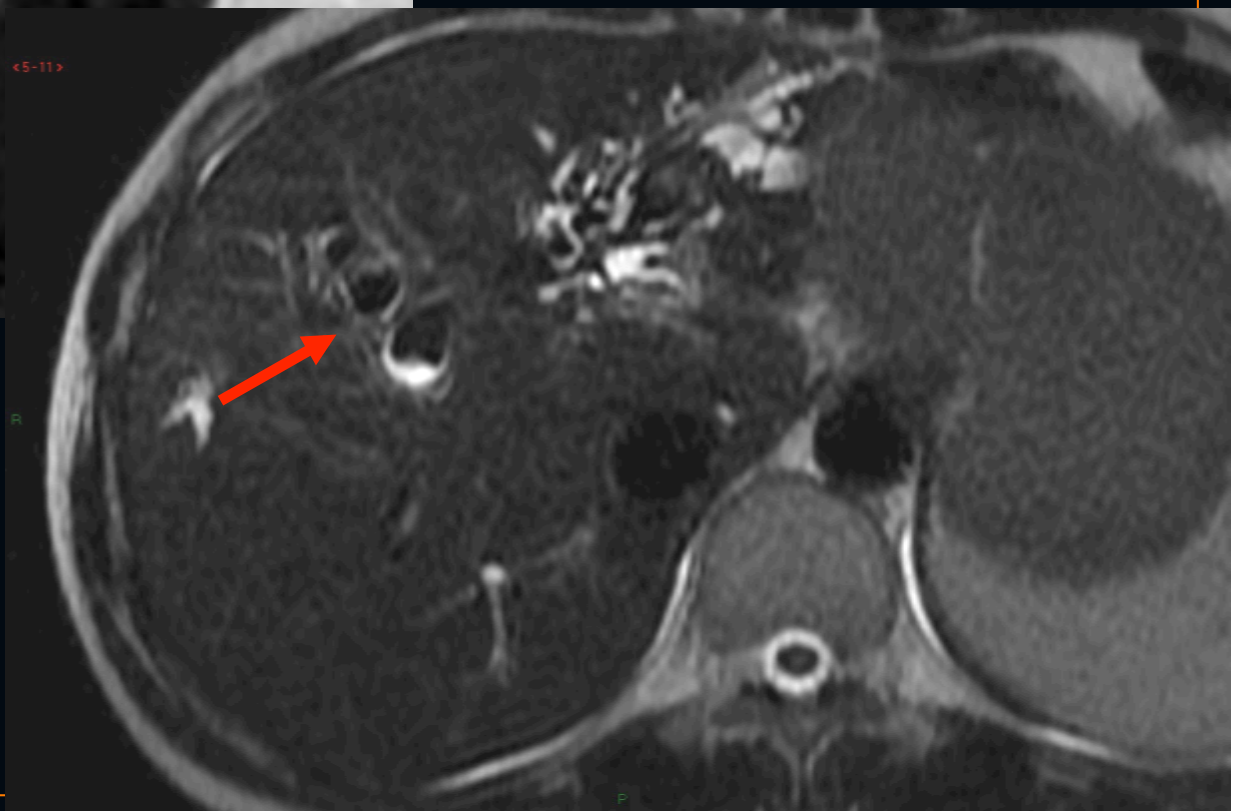
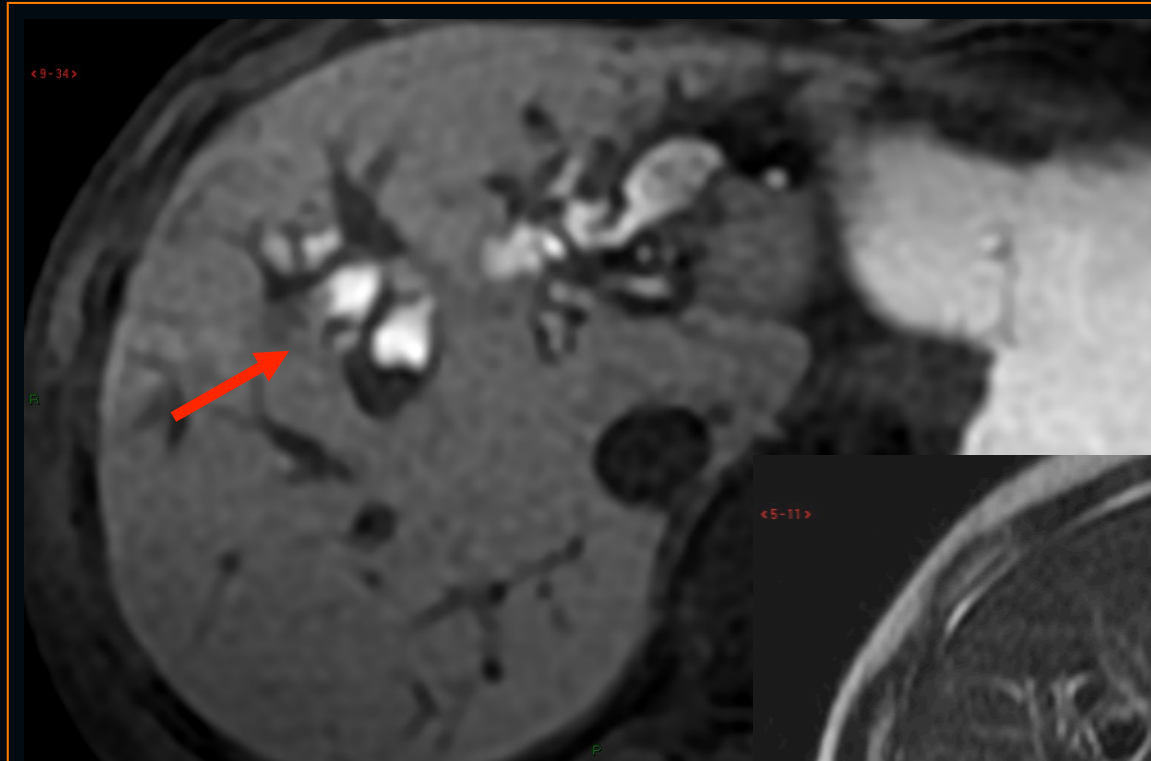




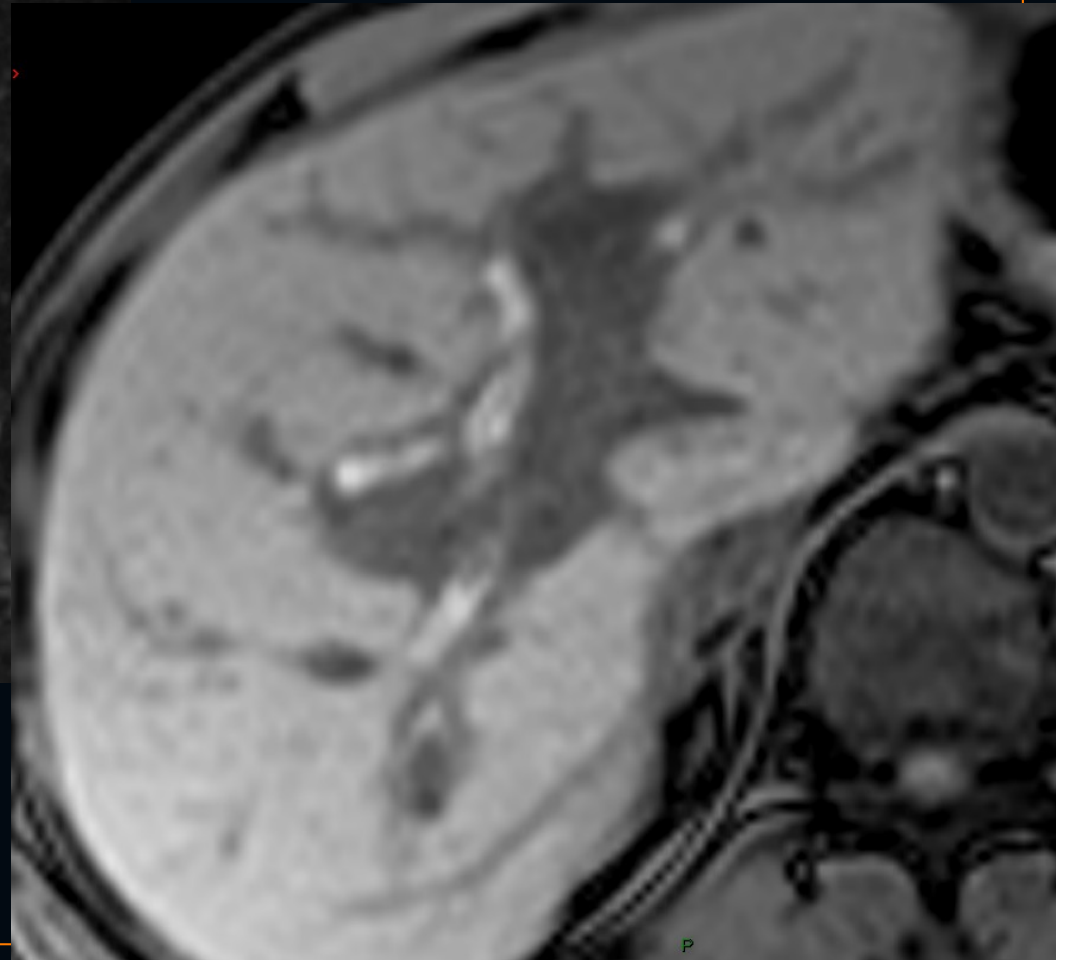
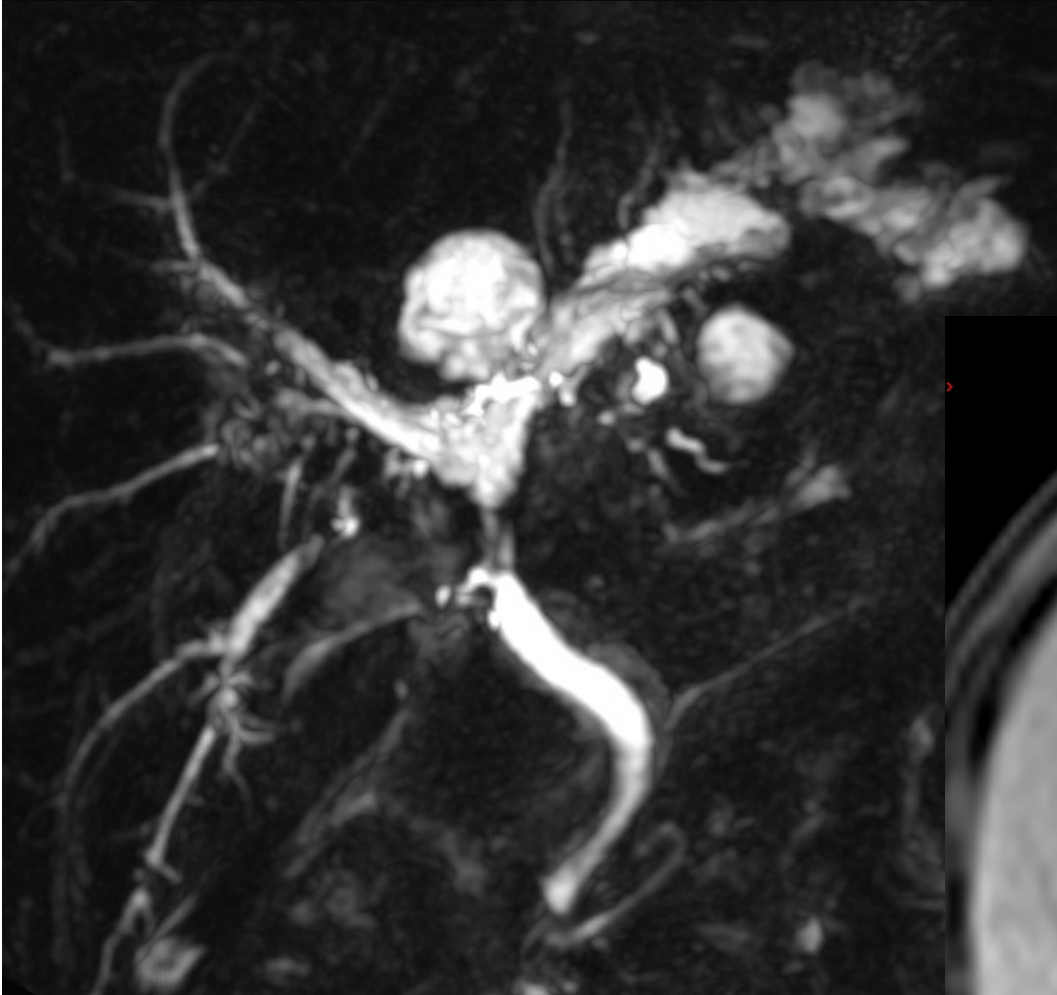
# Sténose cholédocienne



# Caroli



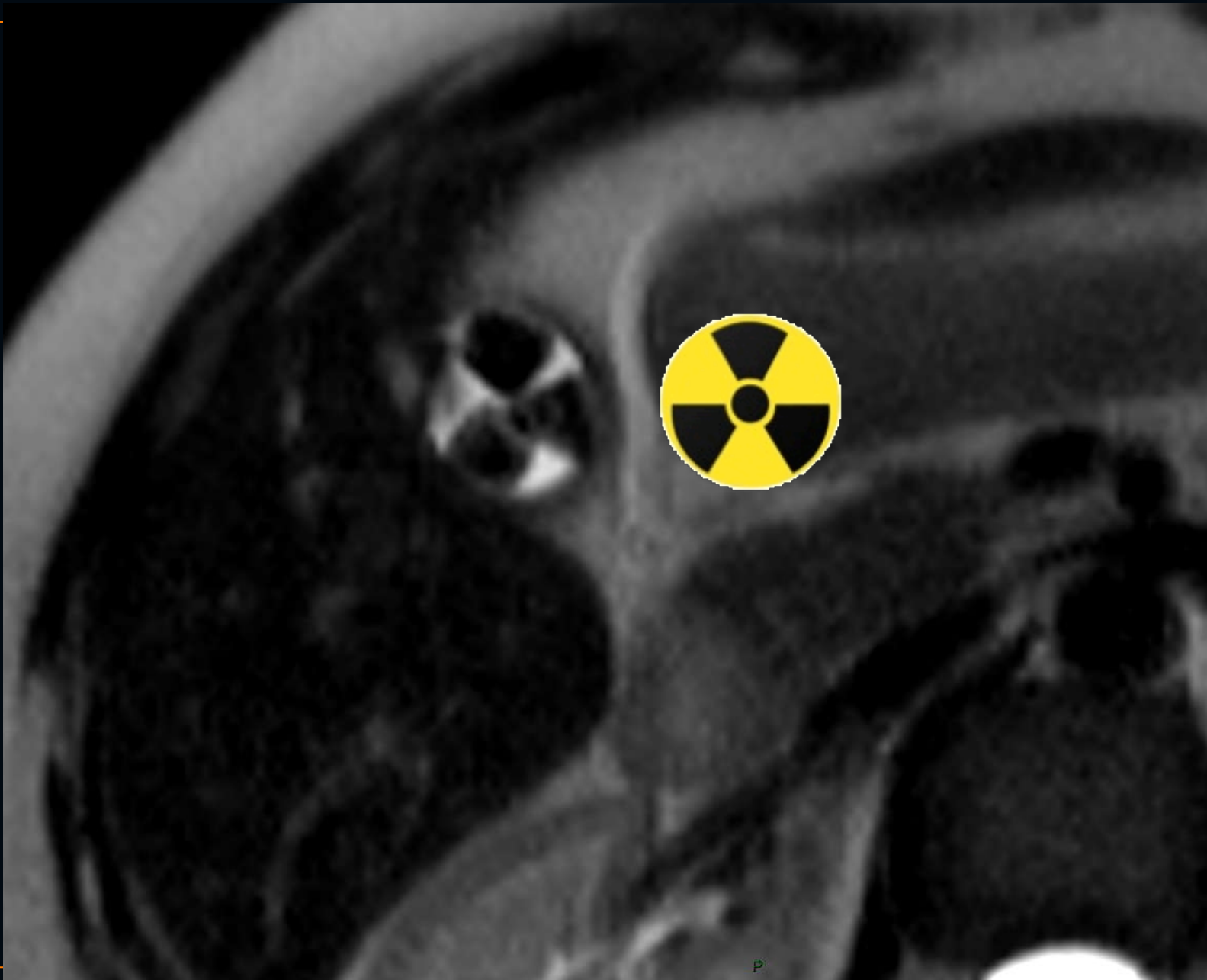
# Cholangite post TH



# DERNIER MESSAGE

**L'IRM est une modalité d'imagerie  
non irradiante, sans risque infectieux  
ou hémorragique**

Même si ...



# CONCLUSION

- Fiabilité IRM comparativement à la CPRE
- Possibilité de détection et localisation des calculs avec Se 70% Sp 90%
- Limites (taille, nature)
- T2 + Natives cholangio-IRM + T1 en saturation de graisse, avant gado